



## Flat 4, 28 Elmcourt Road London, SE27 9BZ

**Price Guide £300,000**

PRICE GUIDE £300,000 - £325,000 Nestled on the picturesque Elmcourt Road in West Norwood, this delightful first-floor flat forms part of a beautifully converted Victorian period building. Featuring two well-proportioned bedrooms, the property offers a comfortable living space, ideal for individuals or small families seeking a harmonious blend of character and modern convenience.

On entering, you are welcomed by a bright and inviting reception room, perfect for relaxation or entertaining guests. The separate kitchen is designed, providing ample space for cooking while maintaining a sense of privacy from the living area.

Residents benefit from communal parking at the front of the property, providing convenience for you. A standout feature is the communal garden, offering a large outdoor space to unwind, enjoy fresh air, or socialise with neighbours—adding a strong sense of community to the living experience.

Located in vibrant West Norwood, the flat is within easy reach of local shops, cafes, and parks. Excellent transport links include Tulse Hill Train Station, just a 3-minute walk (0.1 miles) away, with direct services to London Bridge, Blackfriars, Farringdon, and St Pancras International. The property is also close to beautiful green spaces, including the much-loved Brockwell Park, perfect for weekend walks and outdoor activities.

With its period charm, practical layout, and desirable location, this flat represents a fantastic opportunity to settle in a

### Viewing

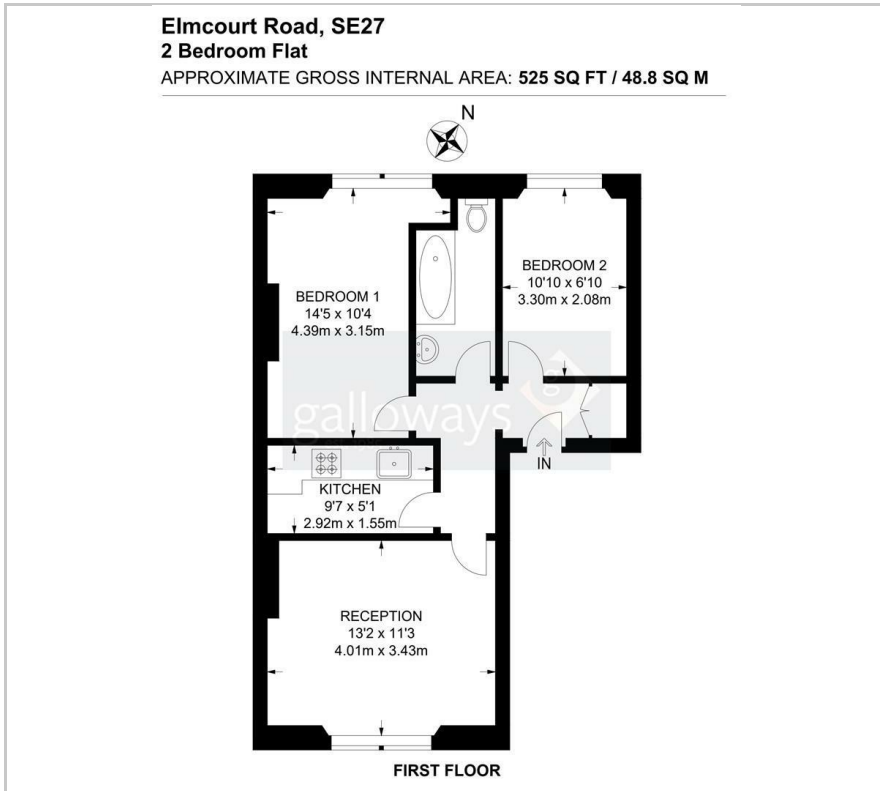
Please contact our Galloways West Norwood Office on 020 8766 6111

if you wish to arrange a viewing appointment for this property or require further information

- PRICE GUIDE £300,000 - £325,000
- TWO BEDROOM VICTORIAN CONVERSION
- FIRST FLOOR FLAT
- COMMUNAL PARKING
- COMMUNAL REAR GARDEN
- SEPERATE KITCHEN
- BRIGHT AND AIRY
- LOCATED ON THE BORDERS OF DULWICH
- 3 MINUTES WALK TO TULSE HILL TRAIN STATION
- (WALKING TIMES ESTIMATED BY GOOGLE MAPS)



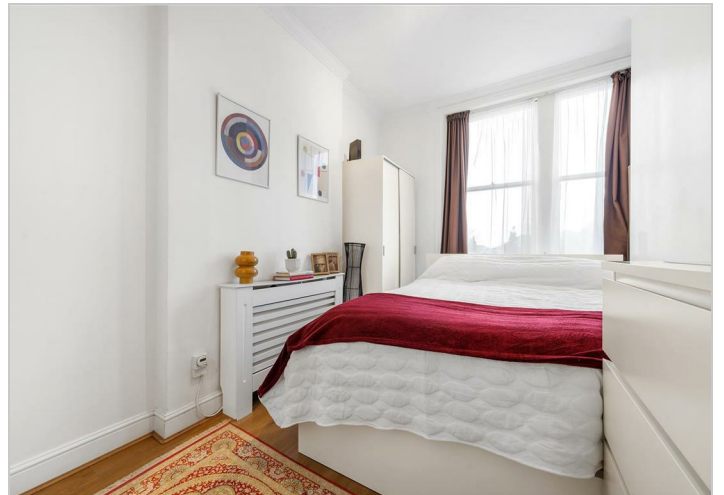
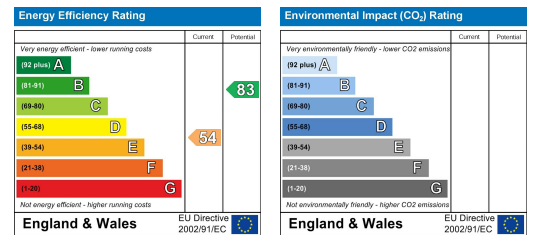
## Floor Plan



## Area Map



## Energy Efficiency Graph



These particulars, whilst believed to be accurate are set out as a general outline only for guidance and do not constitute any part of an offer or contract. Intending purchasers should not rely on them as statements of representation of fact, but must satisfy themselves by inspection or otherwise as to their accuracy. No person in this firm's employment has the authority to make or give any representation or warranty in respect of the property.